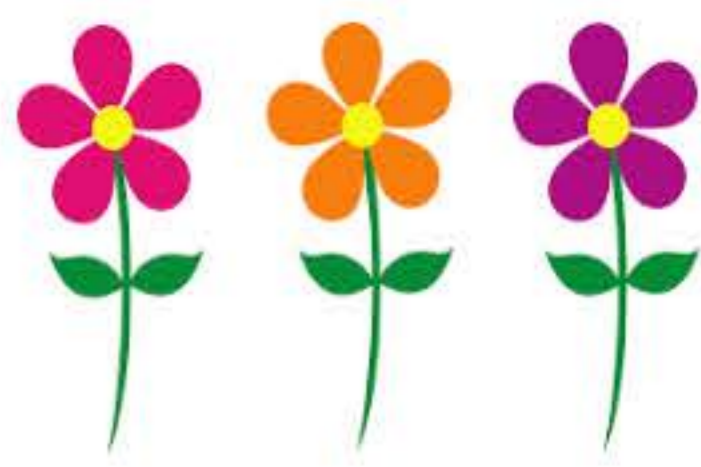


ALBERTA FOOD EQUIPMENT MAY FLYER



While Quantities Last

Effective until May 31st, 2019

2.5 Gallon Insulated Beverage Container, Dark Brown

was: \$225.96

**NOW:
\$172.78**



250LCD131

3/8" Heavy Duty Table Top Manual Dicer

was: \$378.32

**NOW:
\$273.71**



15001

Undercounter Ice Machine. 84 lb/38kg Production/24 hours, 24 lb Capacity Built-In Bin. Air-Cooled, Self-Contained Condenser. 115v/60/1-ph, 6.0 amps



was: \$3521.67

**NOW:
\$3134.29**

ICEU070A

3/8", Heavy Duty Nickel-Plated Ductile Cast Iron Frame Potato Cutter

was: \$294.13

**NOW:
\$252.99**



47713

1L Soap Dispenser



was: \$20.93

**NOW:
\$18.25**

SD-100

Undercounter Ice Machine. 238 lb/108 kg production/24 hours, 70 lb. Built-In Bin Air-Cooled, Self-Contained Condenser. 115v/60/1-ph, 11.6 amps



was: \$3844.81

\$3421.89

ICEU220HA

Urinal Screen With Deodorizer Block

was: \$5.70

**NOW:
\$4.16**



USF-4

3.5" Henckels Paring Knife

was: \$6.89

**NOW:
\$5.25**



11204-094



Alberta Food Equipment was awarded the "**2018 Large Dealer of the Year!**" by manufacturers across North America! Thank you to all our customers who made this possible!

10411 Allendale Road NW, Edmonton

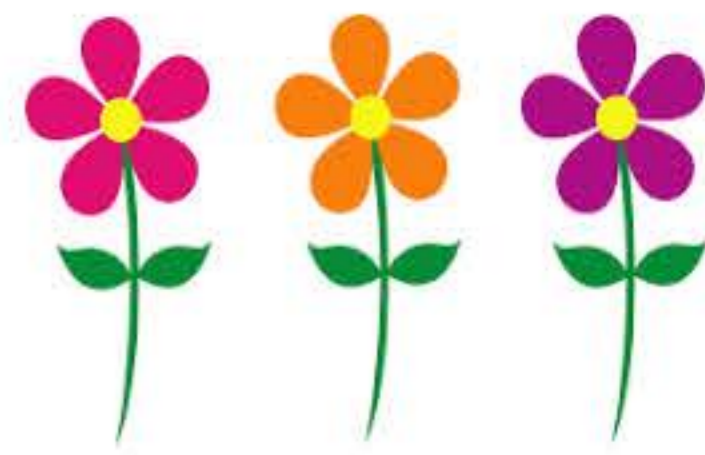


Alberta Food Equipment Est. 1986
10411 Allendale Road NW
780-466-6565

Find us at www.afe.ab.ca
Follow us on



ALBERTA FOOD EQUIPMENT MAY FLYER



While Quantities Last **Effective until May 31st, 2019**

35-40 lb Propane Deep Fryer. Millivolt Thermostat Controls. Twin Baskets. 14" x 14" Tank Size. 90,000 BTU



was: \$1029.23

**NOW:
\$895.00**

LG300-LP

60qt Insulated Cambro Pan Carrier. Air-Tight. Granite Grey



was: \$564.89

**NOW:
\$498.99**

UPC400191

10% OFF
ALL In Stock Filters for Fryers, Ice Machines, Coffee Brewers, Steamers, Combi-Ovens, and Hoods!

Single Burner Stock Pot Range. Cast Iron Two-Ring Burner. Manual Controls. 18" W x 24" D x 23" H 110,000 BTU, NG



was: \$838.58

**NOW:
\$737.95**

VSP100

BUNN Frozen Drink Machine. (2) 3 Gallon Hoppers. Touchpad Display. 120v/60/1-ph

Lease/Renting Options Available:

Established business

24 months: \$161
36 months: \$111
48 months: \$87
60 months: \$73

Start up

24 months: \$165
36 months: \$122

Rental

52 weeks: \$36



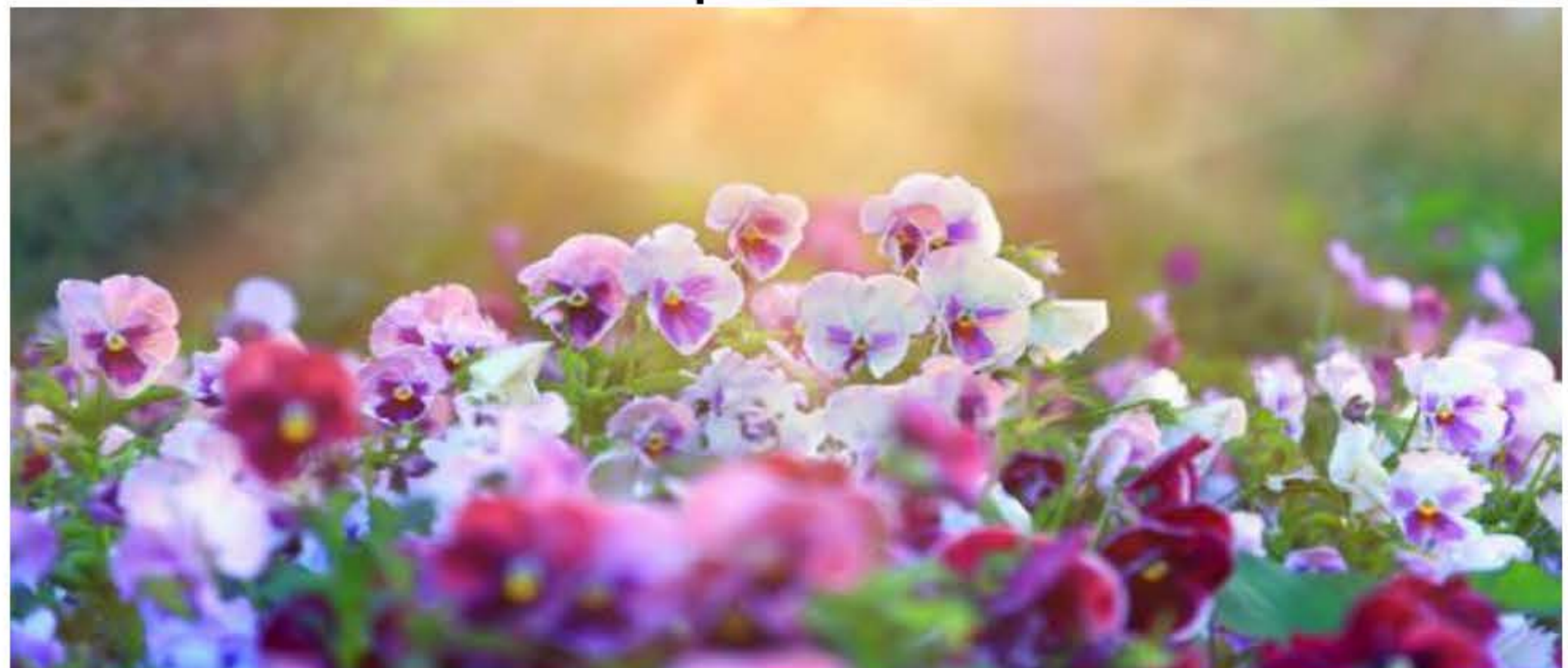
**ON SALE
FOR \$3200**

34000.6081

Patio season is just around the corner! We have a wide variety of tables and chairs that can meet your patio needs! Contact our office or your salesperson for more information!



Grosfillex



10411 Allendale Road NW, Edmonton

Alberta Food Equipment Est. 1986
10411 Allendale Road NW
780-466-6565



Find us at www.afe.ab.ca
Follow us on

